

PRODUCT CATALOGUE 2017/2018

13 CHRIS STREET, ALRODE, ALBERTON

Tel: +27(0) 11 - 864 7625 Fax: +27(0) 11 - 908 5157

trust@gapdistributors.co.za www.gapdistributors.co.za



CONTENTS

Multi Plug-in Multi Plug-in With Surge	1
Multiplug with Cord Multiplug with Cord And Surge	2
Extension Cord Sets Janus Plugtops Bed Switch	3
Downlighter Fittings Lamp Holders	4
LED Lamps Rechargeable Lamps	5
LED Tubes Open Channel Fittings	6
Vapour Proof Fittings Photocell	7





MULTI PLUG-IN



GAP411

1 Way Plug-in (GAP-E001)
Multiplug with 1x Euro



GAP426

2 Way Plug-in (GAP-E002)
Multiplug with 2x Euro



GAP427

3 Way Plug-in (GAP-E003)
Multiplug with 3x Euro



GAP428

1 Way Plug-in (GAP-E100)
Multiplug with 1x Schuko



GAP429

2 Way Plug-in (GAP-E101)
Multiplug with 1x Euro, 1x Schuko



GAP403

3 Way Plug-in (GAP-N030)
Multiplug with 3x Euro



GAP404/1

3 Way Plug-in (GAP-N120)
Multiplug with 1x Schuko, 2x Euro



GAP420

3 Way Plug-in (GAP-E012)
Multiplug with 2x Euro & 1x 3Pin



GAP402

2 Way Plug-in (GAP-N002)
Multiplug with 2x Euro



GAP410

3 Way Plug-in (GAP-N003)
Multiplug with 3x 3Pin



GAP405/1

5 Way Plug-in (GAP-N023)
Multiplug with 2x Euro & 3x 3Pin

MULTI PLUG-IN WITH SURGE



GAP402/S

2 Way Plug-in (GAP-N002+S)
Multiplug with 2x 3Pin
With surge protection



GAP410/S

3 Way Plug-in (GAP-N003+S)
Multiplug with 3x 3Pin
With surge protection



GAP405/S

5 Way Plug-in (GAP-N023/1+S)
Multiplug with 2x Euro & 3x 3Pin
With surge protection

Schuko is made to only accept the correct pole to pole connection (i.e. neutral-neutral and live-live) and therefore protect the plugged-in device. Euro has support on the sides for plug not to fall out or loose connection. Each 3Pin has an automatic shutter to act as a preventative measure.

MULTIPLUG WITH CORD



GAP416/1

6 Way Multiplug (GAP-N123)
Multiplug with 1x Shuko & 2x Euro & 3x 3Pin



GAP416/S

6 Way Multiplug + Surge (GAP-N123/1+S)
Multiplug with 1x Shuko & 2x Euro & 3x 3Pin. Surge protection



GAP407/1

7 Way Multiplug (GAP-N043)
Multiplug with 4x Euro & 3x 3Pin



GAP407/S

7 Way Multiplug + Surge (GAP-N043/1+S)
Multiplug with 4x Euro & 3x 3Pin. Surge protection



GAP408

8 Way Multiplug (GAP-N044)
Multiplug with 4x Euro & 4x 3Pin



GAP409

8 Way Multiplug + Surge (GAP-N044-S)
Multiplug with 4x Euro & 4x 3Pin. Surge Protection



GAP409/5

8 Way Multiplug + Surge (GAP-N044/1+S+5M)
Multiplug with 4x Euro & 4x 3Pin. Surge protection & 5M cord



GAP430

10 Way Multiplug (GAP-N154L)
Multiplug with 1x Shuko & 5x Euro & 4x 3Pin.



GAP430/S

10 Way Multiplug (GAP-N154L+S)
Multiplug with 1x Shuko & 5x Euro & 4x 3Pin. Surge protection



GAP430/5M

10 Way Multiplug (GAP-N154L+S+5M)
With 1x Shuko & 5x Euro & 4x 3Pin. Surge protection & 5M cord



GAP412/S

12 Way Multiplug + Surge (GAP-N165/1+S)
Multiplug with 1x Shuko & x Euro & 5x 3Pin. Surge protection



GAP412

12 Way Multiplug (GAP-N165)
Multiplug with 1x Shuko & x Euro & 5x 3Pin



EXTENSION CORD SETS



GAP423/H

Extension Cord 3m. For domestic use, varying lengths. 3 pin plugtop and 2x 3pin janus couplers on the other end. Easy to carry and tidy up



GAP423; GAP425

Extension Cord 3m; 5m. For domestic use, varying lengths. 3 pin plugtop and 2x 3pin janus couplers on the other end.

JANUS



GAP414

Rubber Janus Coupler (GAP-R002)
Durable ideal for industrial use. Automatic shutter



GAP418/B

PVC Janus Coupler (GAP-W002)
Ideal for domestic use. Automatic shutter



GAP418

PVC Janus Coupler (GAP-W002)
Ideal for domestic use. Automatic shutter

PLUGTOP



GAP413

16A Rubber Plugtop Black (GAP-R001)
Durable ideal for industrial use. Clear bottom



GAP401/B

PVC Plugtop White (GAP-W001)
16Amp plugtop ideal for domestic use



GAP415

PVC Plugtop Dedicated Red
Plugtop with clear bottom for dedicated wall socket

BED SWITCH



GAP417

Through Switch (Bed Switch) White
Made from PVC. Used for inline switching for lamps



GAP419

Through Switch (Bed Switch) Black
Made from PVC. Used for inline switching for lamps

STRAIGHT DOWNLIGHTER FITTINGS



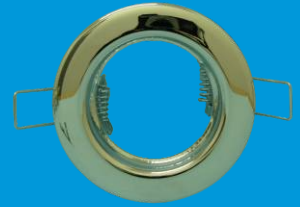
GAP320

Straight Downlighter (ED205) White
Downlighter with 65mm cut-out



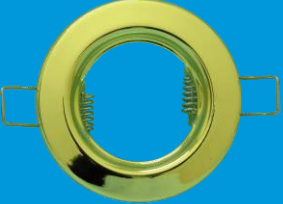
GAP321

Straight Downlighter (ED205) Antique Brass
Downlighter with 65mm cut-out



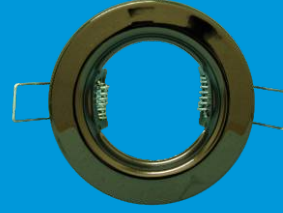
GAP322

Straight Downlighter (ED205) Chrome
Downlighter with 65mm cut-out



GAP323

Straight Downlighter (ED205) Brass
Downlighter with 65mm cut-out



GAP324

Straight Downlighter (ED205) Gun Metal
Downlighter with 65mm cut-out



GAP325

Straight Downlighter (ED205) Satin Chrome
Downlighter with 65mm cut-out

SWIVEL DOWNLIGHTER FITTINGS



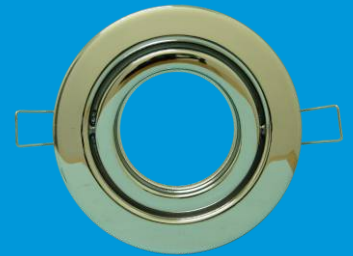
GAP310

Moveable Downlighter (ED203) White
Downlighter with 85mm cut-out



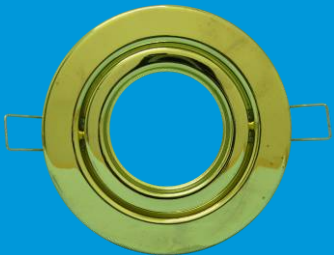
GAP311

Moveable Downlighter (ED203) Antique Brass
Downlighter with 85mm cut-out



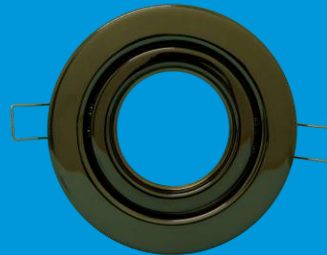
GAP312

Moveable Downlighter (ED203) Chrome
Downlighter with 85mm cut-out



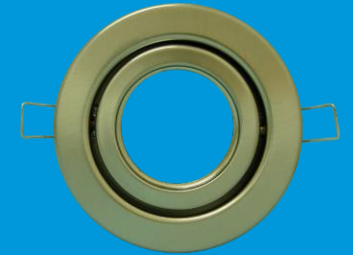
GAP313

Moveable Downlighter (ED203) Brass
Downlighter with 85mm cut-out



GAP314

Moveable Downlighter (ED203) Gun Metal
Downlighter with 85mm cut-out



GAP315

Moveable Downlighter (ED203) Satin Chrome
Downlighter with 85mm cut-out

LAMP HOLDERS



GAP104

MR16 Porcelain Lamp Holder
12V for use with
MR16 Lamps



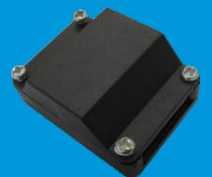
GAP121

GU10 Porcelain Lamp Holder
240V for use with
GU10 Lamps



GAP122

GU10 Porcelain Lamp Holder +Bracket
240V Max 50W + mounting bracket
& connector box



GAP123

Terminal Connector Box
To connect wires
in the ceiling



LED LAMPS

CW = Cool White
WW = Warm White



GAP164
LED Lamp MR16 4W 12V
WW(3000k)
8cell 260lm 12V 120° angle



TWIN PACK
GAP143/T
LED Lamp GU10 4W
WW(2700k)
21cell 260lm 240V 120° angle



GAP147 / GAP146
LED Lamp GU10 4.5W
CW(6500k) / WW(3000K)



GAP144
LED Lamp GU10 5W
WW(2700k)
24cell 350lm 240V 120° angle



GAP154 / GAP155
LED Lamp GU10 5W 5cell
CW(6500k) / WW(2700k)
360lm 240V 60° angle



GAP148 / GAP149
LED GU10 6W 12cell
CW(6500k) / WW(2700k)
420lm 240V 105° angle



GAP156/D / GAP157/D
LED GU10 6W 12cell Dimmable
CW(6500k) / WW(2700k)
420lm 240V 105° angle



GAP152 / GAP153
LED Lamp GU10 8W 4cell 500lm
CW(6500k) / WW(2700k)
240V 60° angle



GAP158 / GAP159
LED Lamp GU10 8W 12cell 700lm
CW(6500k) / WW(2700k)
240V 105° angle. Standard height

RECHARGEABLE LED



GAP170

Rechargeable LED Down light with standby power. (Each light includes a remote control with batteries)
3 Brightness settings dim up and down via remote control. Both GU10 & MR16 fittings 230V 4.5W Connect via lampholder

RECHARGEABLE LED

E27



GAP171

LED Rechargeable Lightbulb & Emergency Flashlight
in one. Fits in E27 Fitting

B22



GAP172

LED Rechargeable Lightbulb & Emergency Flashlight
in one. Fits in B22 Fitting

8 Hours of continuous light on single charge. Can use as a normal remote control LED bulb or as a flash light. Extendable handle for when using as a flash light. (includes remote control with batteries). 3 Brightness settings dim up and down via remote control Use on AC when using in a light fitting, can be on while charging. Use on DC when using as a flash light. 230V 4.5W 260LM

LED TUBES

GAP163 4000K Cool White LED Tube 9W 0.6m 240V Frosted

GAP160 6500K Extra Cool White LED Tube 18W 1.2m 240V Frosted + Aluminium Heat Sink
GAP161 6500K Extra Cool White LED Tube 18W 1.2m 240V Frosted
GAP161/W 4000K Cool White LED Tube 18W 1.2m 240V Frosted
GAP165 6500K Cool White Economical LED Tube 18W 1.2m 240V Frosted

GAP162 6000K Extra Cool White LED Tube 25W 1.5m 240V Frosted + Aluminium Heat Sink
GAP162/W 4000K Cool White LED Tube 25W 1.5m 240V Frosted + Aluminium Heat Sink

OPEN CHANNEL FITTINGS

GAP302 T8 Open Channel Fitting 1x1.2m (4 Foot) Available empty or with Tubes
GAP303 T8 Open Channel Fitting 1x1.5m (5 Foot) Available empty or with Tubes

GAP302/2 T8 Open Channel Fitting 2x1.2m (4 Foot) Available empty or with Tubes
GAP303/2 T8 Open Channel Fitting 2x1.5m (5 Foot) Available empty or with Tubes

VAPOUR PROOF FITTINGS



- VAP1.2M** Vapour Proof Fitting 2x1.2m (4 Foot) IP65 220-240V~50Hz Available empty or with Tubes
- VAP1.5M** Vapour Proof Fitting 2x1.5m (5 Foot) IP65 220-240V~50Hz Available empty or with Tubes



PHOTOCELL



GAP019

16A Photocell White & Green
Durable and watertight with
sensor and time delay



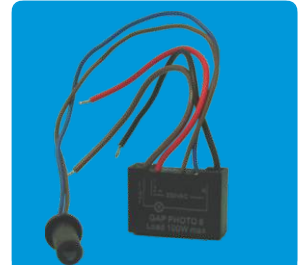
GAP021

25A Photocell White & Blue
Durable and watertight with
sensor and time delay



GAP015

16A Photocell Swivel Grey
Swivel neck to turn to/away from light,
adjustable sensor cover to lower light
exposure. Durable and watertight with
sensor and time delay



GAP018

Miniature Photocell 220V~
Max 100W. Small &
compact, can be mounted
inside a light fitting